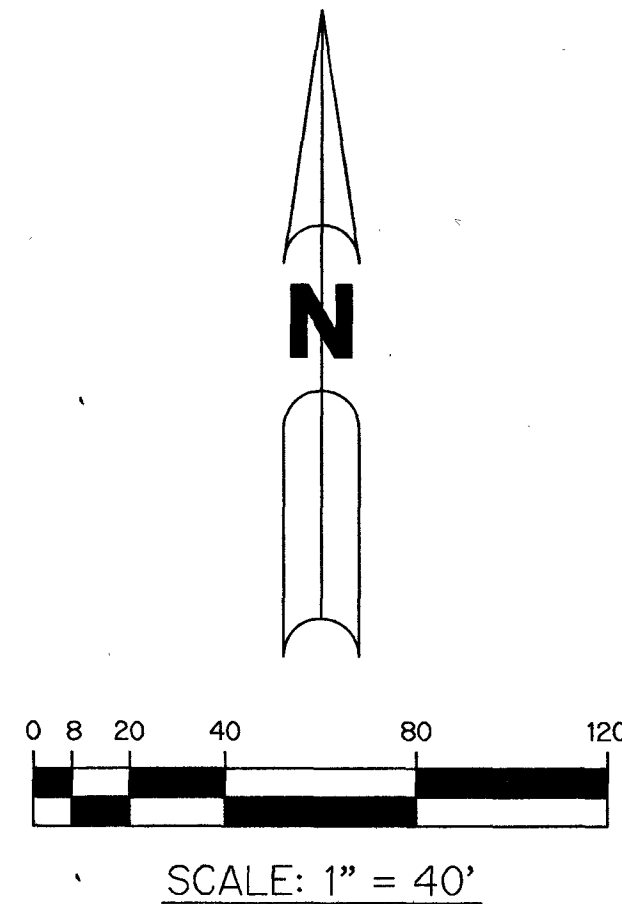


# BOCA RATON GOLF COURSE PUD - PLAT SIX

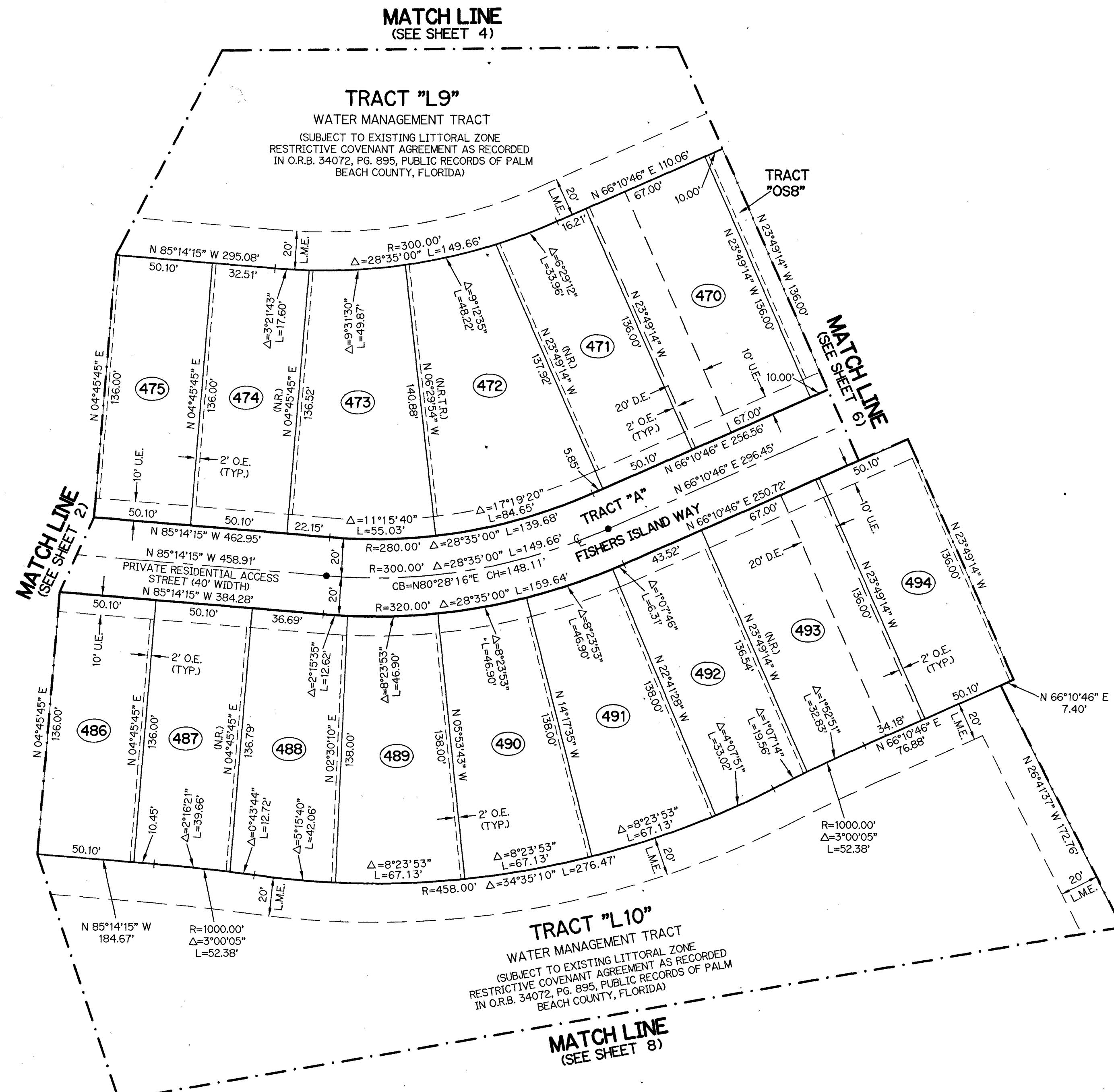
BEING A REPLAT OF A PORTION OF TRACT A, BOCA RATON GOLF COURSE PUD, AS RECORDED IN PLAT BOOK 133, PAGES 23 THROUGH 28, PUBLIC RECORDS OF PALM BEACH COUNTY, FLORIDA, LYING WITHIN SECTION 17, TOWNSHIP 47 SOUTH, RANGE 42 EAST, PALM BEACH COUNTY, FLORIDA

SHEET 5 OF 10

162

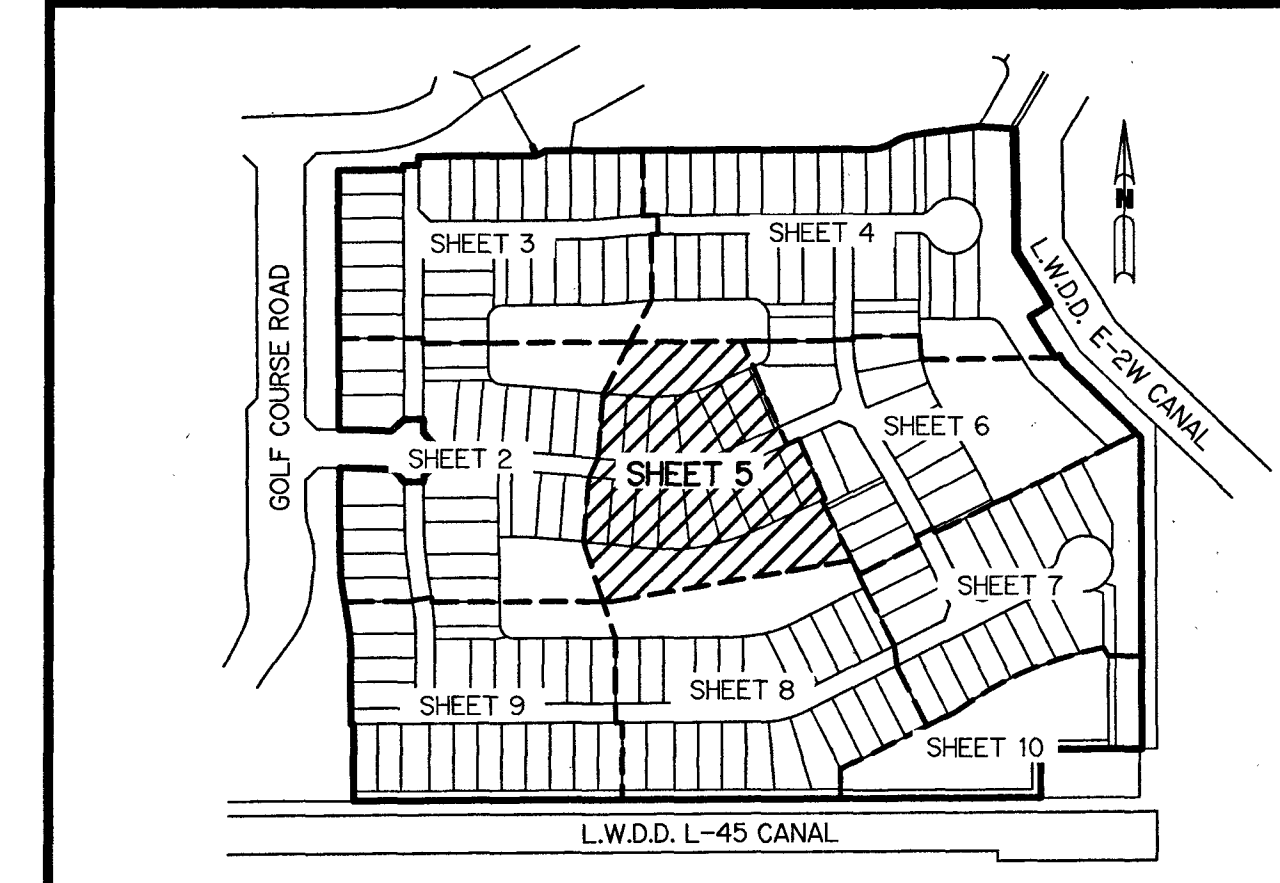


- LEGEND:**
- ▲ - SET PERMANENT REFERENCE MONUMENT 5/8" IRON ROD 1.5' IN LENGTH 1.4" CAP STAMPED PRM L.B. #7741 UNLESS OTHERWISE NOTED.
  - - SET PERMANENT REFERENCE MONUMENT 4"x4" CONCRETE MONUMENT WITH 1.5" DISK STAMPED L.B. #7741
  - - FOUND PERMANENT REFERENCE MONUMENT 4"x4" CONCRETE MONUMENT WITH 1.5" DISK STAMPED L.B. #7741
  - - SET PERMANENT CONTROL POINT NAIL WITH 1.25" DISK STAMPED L.B. #7741
  - - FOUND PERMANENT CONTROL POINT NAIL WITH 1.25" DISK STAMPED L.B. #7741
  - AGR - AGRICULTURAL
  - Δ - DELTA ANGLE
  - B.E. - BUFFER EASEMENT
  - BLK - BLOCK
  - CB - CHORD BEARING
  - CH - CHORD DISTANCE
  - C - CENTERLINE
  - D.B. - DEED BOOK
  - D.E. - PRIVATE DRAINAGE EASEMENT
  - ESMT - EASEMENT
  - F.P.L. - FLORIDA POWER & LIGHT
  - L - ARC LENGTH
  - L.A.E. - LIMITED ACCESS EASEMENT
  - LB - LICENSED BUSINESS
  - L.M.A.E. - LAKE MAINTENANCE ACCESS EASEMENT
  - L.M.E. - LAKE MAINTENANCE EASEMENT
  - L.W.D.D. - LAKE WORTH DRAINAGE DISTRICT
  - N.R. - NOT RADIAL
  - N.R.T.R. - NOT RADIAL TO REAR LINE
  - N.T. - NON-TANGENT
  - N.T.S. - NOT TO SCALE
  - O.R.B. - OFFICIAL RECORD BOOK
  - O.E. - MAINTENANCE & ROOF OVERHANG EASEMENT
  - P.B.C.O. - PALM BEACH COUNTY
  - P.B.C.U.E. - PALM BEACH COUNTY UTILITY EASEMENT
  - P.B. - PLAT BOOK
  - P.C. - POINT OF CURVATURE
  - P.C.C. - POINT OF COMPOUND CURVATURE
  - P.C.P. - PERMANENT CONTROL POINT
  - P.D.E. - PUBLIC DRAINAGE EASEMENT
  - PG. - PAGE
  - PGS. - PAGES
  - P.O.B. - POINT OF BEGINNING
  - P.N.R.I. - POINT OF NON-RADIAL INTERSECTION
  - P.N.T.I. - POINT OF NON-TANGENT INTERSECTION
  - P.O.C. - POINT OF COMMENCEMENT
  - P.O.I. - POINT OF INTERSECTION
  - P.R.C. - POINT OF REVERSE CURVATURE
  - P.R.I. - POINT OF RADIAL INTERSECTION
  - P.S.M. - PROFESSIONAL SURVEYOR AND MAPPER
  - P.T. - POINT OF TANGENCY
  - PUD - PLANNED UNIT DEVELOPMENT
  - R - RADIUS
  - RAD - RADIAL
  - R/W - RIGHT-OF-WAY
  - R.D. & D. - ROAD, DYKE AND DITCH RESERVATION
  - SIRC - SET 5/8" IRON ROD & CAP STAMPED "PRM LB7741"
  - SN&D - SET MAGNETIC NAIL & DISK STAMPED "PRM LB7741"
  - S.T. - SURVEY TIE
  - TYP. - TYPICAL
  - UE - UTILITY EASEMENT
  - N=790000.00 - STATE PLANE COORDINATE VALUE
  - E=930000.00 - STATE PLANE COORDINATE VALUE



**NOTES:**  
 COORDINATES SHOWN ARE GRID COORDINATES DATUM = NAD 83 (1990 ADJUSTMENT)  
 ZONE = FLORIDA EAST ZONE  
 LINEAR UNIT = U.S. SURVEY FEET  
 COORDINATE SYSTEM = 1983 STATE PLANE TRANSVERSE MERCATOR PROJECTION  
 ALL DISTANCES ARE GROUND (UNLESS OTHERWISE NOTED)  
 SCALE FACTOR = 1.00002408  
 PLAT BEARING = GRID BEARING  
 GROUND DISTANCE X SCALE FACTOR = GRID DISTANCE

THIS INSTRUMENT WAS PREPARED BY  
 PERRY C. WHITE, P.S.M. 4213, STATE OF FLORIDA  
 SAND & HILLS SURVEYING, INC.  
 8461 LAKE WORTH ROAD, SUITE 410  
 LAKE WORTH, FLORIDA 33467  
 LB-7741



KEY MAP  
N.T.S.

BOCA RATON GOLF COURSE PUD - PLAT SIX